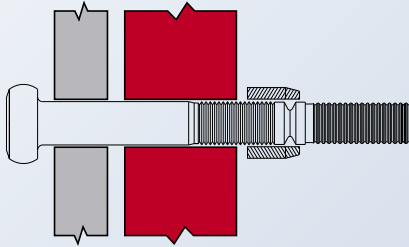




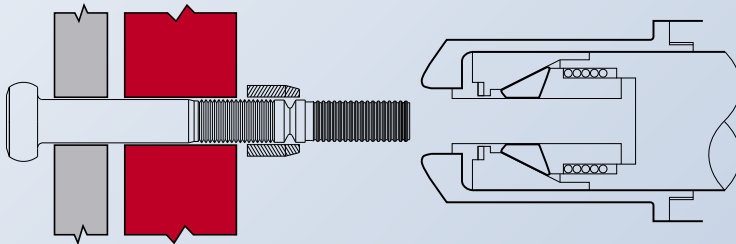
Cooper & Turner Limited

CONSTRUCTION . BRIDGE . TUNNEL . RAIL . WIND ENERGY . FASTENERS

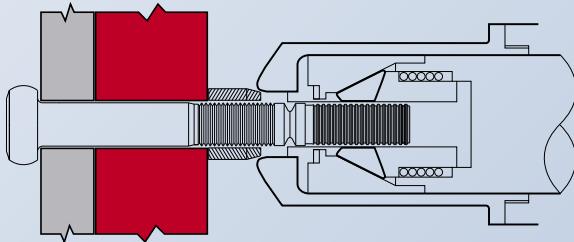
C&TPIN® OPERATING INSTRUCTIONS



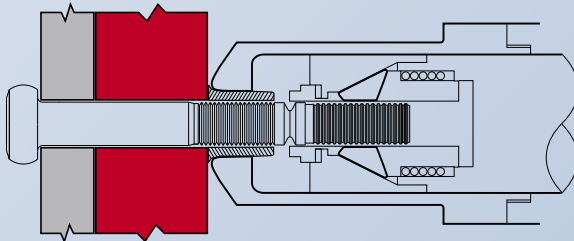
Place the appropriate C&TPIN® through the joint, placing the C&TPIN® sleeve over the locking grooves by hand.



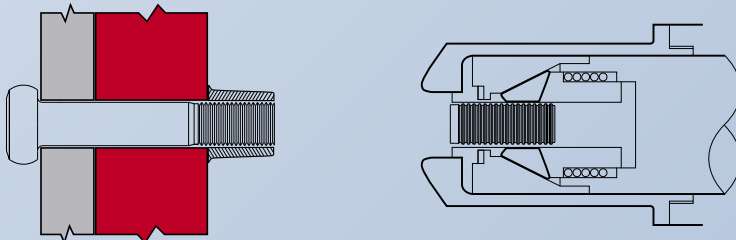
Offer the installation tool to the C&TPIN® assembly



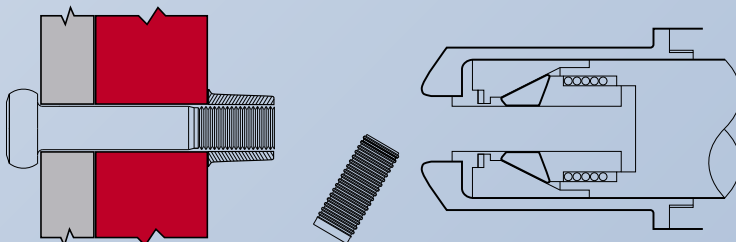
Push the installation tool over the pull groove section of the C&TPIN®, ensure that both the C&TPIN® and sleeve are in contact with the joint tool as shown



Push the trigger button on the tool to swage the sleeve onto the C&TPIN®



When swaging is complete, the pintail of the C&TPIN® will fracture, at this point release the trigger button and withdraw the tool



When the tool is fully withdrawn, the fractured pintail will be ejected, installation is complete

C&TPIN®
INSTRUCTIONS